

mima

#3

Middlesbrough
Institute of Modern Art

Aug – Nov 2011



Admission FREE
www.visitmima.com

mima

Buy one drink and get a free squash for any accompanying child

Simply fill in, cut out and bring along this voucher to Café Prego

First name Surname

Email

Postcode

Offer valid 01.08.11 – 01.09.11. One voucher per person. Voucher only valid when completed. You will be added to mima's mailing list. On receiving your first email you may unsubscribe. Your details will not be passed to third parties. Not to be used in conjunction with other offers.



Select from a fantastic range of bagels, paninis, salads and treats.

Why not finish your meal with an indulgent cake and a fresh illy coffee.

Café Prego is family friendly with food and drink for children, bottle-warming facilities and highchairs.

Want 10% off?
Join mimafriends from £15 for a whole year's discount
www.mimafriends.org.uk

Café Prego is open daily:
Mon, Tues, Wed and Fri
8.30am–4.30pm
Thurs 8.30am–7.00pm
Sat 10.00am–4.30pm
Sun 12noon–4.00pm
Closed Bank Holidays
t: +44 (0)1642 222 784

Photography by Eve Photography

Hello

On show this season is a colourful UK touring exhibition of British collage from the Arts Council Collection premiering at mima, an intimate look at work by world-renowned artist Ben Nicholson including many unseen works, and an exciting solo exhibition by North East based artist Richard Forster, with new work linked to Saltburn shore.

Don't miss our free vibrant family areas, with activities that encourage imagination and creativity, and lots of other great events to fill your summer.

We hope you enjoy our new shows and look forward to seeing you soon.

Kate Brindley, Director

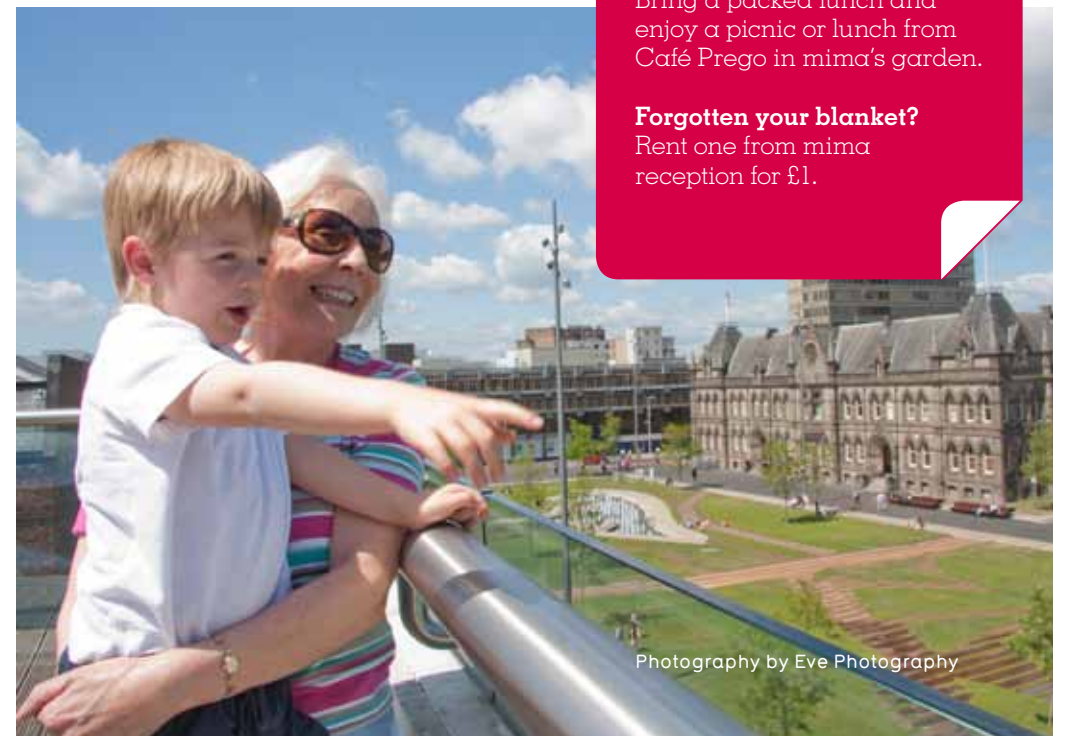
Visit mima this summer and...

Picnic

Bring a packed lunch and enjoy a picnic or lunch from Café Prego in mima's garden.

Forgotten your blanket?

Rent one from mima reception for £1.



Photography by Eve Photography

mima | café

Contents

Exhibitions	4
Events	8
Calendar	14
News	18
Visit mima	22

#3

Aug – Nov 2011



Photography by Cathal Carey

Don't Miss...

How to install an exhibition

David Brown, mima's Technical Services Officer, explores the whys and hows of hanging an award-winning exhibition. Bring questions along for handy hints and tips.

Wednesday 10 August

2:00–3:30pm

£2.50

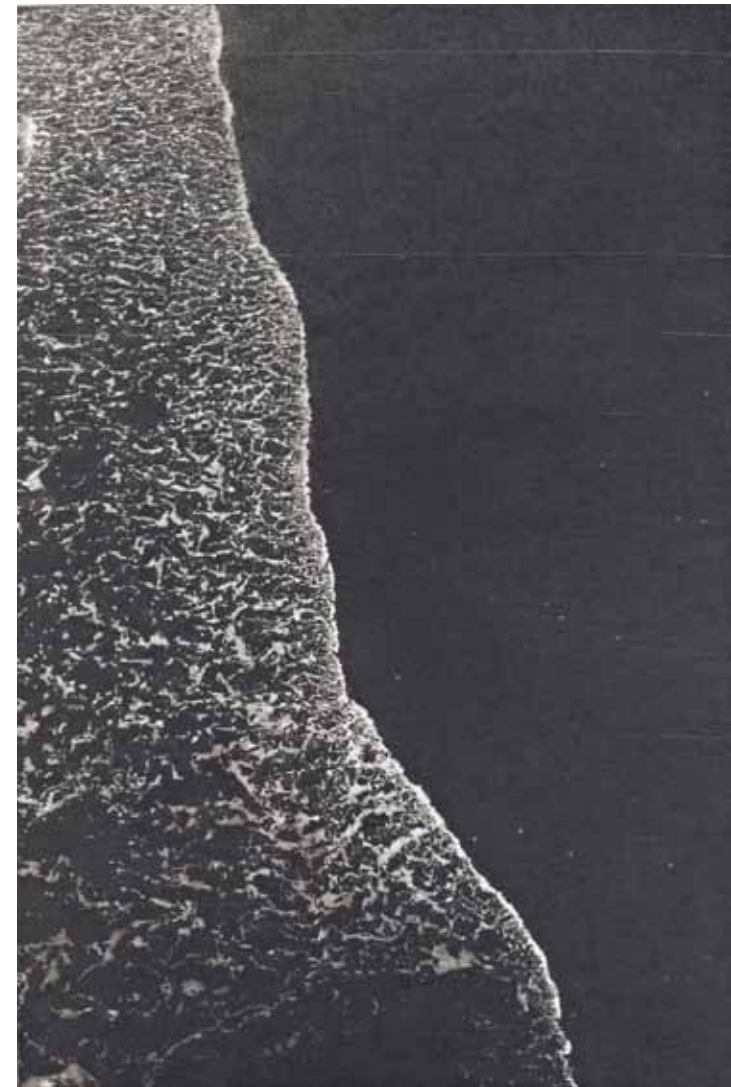
Booking required on 01642 726720

For other talks about the whys and hows by mima staff see pages 10-11



Richard Hamilton, *Interior*, 1964-1965, Arts Council Collection, Southbank Centre, London © Richard Hamilton. All Rights Reserved, DACS 2011

Richard Forster, *Incoming Seas Edge*
Jan 5 2010 1145-1150 AM No. 05 Images
courtesy the artist and Ingleby Gallery,
Edinburgh © Richard Forster



Exhibitions

Transmitter / Receiver The persistence of collage From the Arts Council Collection

22 July – 6 November 2011

Ground Floor Galleries

A new UK touring exhibition launching at mima, that traces the use of collage in British art. The show includes traditional collage on paper alongside painting, sculpture, film and slide projections, all drawn from the Arts Council Collection. Works range from the first influences of the Parisian avant-garde in the early work of Ben Nicholson and Surrealists Eileen Agar and Roland Penrose, through to present day artists such as Steve Claydon,

David Noonan and Idris Khan. Touring to The New Art Gallery, Walsall (4 May – 1 July 2012); Usher Art Gallery, Lincoln (August – October 2012) and Tullie House, Carlisle (16 March – 12 May 2013). Exhibition catalogue £5.00.

Don't miss 'In Conversation' event, see p10.

HAYWARD TOURING
SOUTHBANK
CENTRE

Richard Forster Fast and slow time

29 July – 18 November 2011

Second Floor Galleries

The first museum solo show by this nationally-recognised, North East based artist. The exhibition will present 52 new pencil drawings made specially for mima's galleries. They lead the viewer through a story of specific moments in time, from the seemingly fleeting, shifting sea line at Saltburn-by-the-Sea to a film of the outwardly permanent

construction of pioneering social housing in Eastern Germany and back again.

A book containing a new short story by prize-winning author Colm Tóibín compliments the show. Exhibition price £10.00. The exhibition is curated in association with Ingleby Gallery, Edinburgh.



Ben Nicholson, *Birch Craig (Summer)*,
Oil on Canvas, 20 x 24in. © Angela Verren
Taunt 2011. All rights reserved, DACS

Ben Nicholson The Intimate Surface of Modernism

22 July – 6 November 2011

Project Space 1

This exhibition looks at a series of works by Ben Nicholson, which present a different, more personal, aspect to his practice. Nicholson is one of the major figures of British Modernism and among the most important British artists of the twentieth century.

This exhibition shows a new side to this well-loved artist by showing personal works by Ben and Winifred Nicholson and Alfred Wallis currently on long-term loan to mima.

Kindly supported by mima friends.



Robert Colquhoun, *Woman with Still Life*, 1958 © Tate, London 2011

Between Dimensions The representation of the object

Featuring still lifes from Tate's Collection

25 November 2011 – 11 March 2012

Second Floor Gallery

Artists include Pablo Picasso, Roy Lichtenstein, David Hockney, Robert Colquhoun and Vanessa Bell.

TATE
PLUS

mima | coming soon

FAMILY EVENTS



Photography by Eve Photography

Everyday

Stay + PLAY

An extra space for families to relax, explore and discover.
Project Space 2, Second Floor
Booking not required
FREE

Don't Miss

New! Centre Space

A space to get together, relax and create for mima visitors of all ages. Including:
Stop, Look, Stay Bags, full of lots of looking things to help you have fun with the exhibitions.
Spirograph Tables
Paper and pencils are provided.
mima Atrium, Ground Floor
FREE

Weekly

mini mima

A fun, interactive session looking, talking and creating in response to the current exhibitions. Free play, and refreshments for 0-4s and their parents/carers.
Thursdays 10.00-11.30am
8, 15, 22, 29 September
6, 13, 20 October
3, 10, 17 November
Booking required
£3.50 per child
Accompanying adult **FREE**

mimaDigs!

Get back to nature in mima's award winning garden as we continue to grow plants, vegetables, ideas and fun. Be prepared to get stuck in!
Thursdays 12.30-1.30pm
4, 11, 18, 25 August
8, 15, 22, 29 September
6, 13, 20 October
3, 10, 17 November
Digging equipment provided
Focused on 0-4s but all welcome
Booking not required
FREE

Saturday Story Tree

Grow your own stories with mima's story tree.
Saturdays 12.30-1.00pm
6 August-5 November
All welcome
Booking not required
FREE

Art Trolley

Hands-on creative session suitable for all the family. Work with Jackie, our Trolley leader, and the exciting mima Art Trolley packed with all sorts of materials for making and creating.
Saturdays 1.15-4.15pm
23 July-19 November
All welcome
Booking not required
FREE

School Holidays

August Summer Art Trolley

Every Tuesday, Wednesday, Thursday and Friday in August
11.00-12.00noon
All welcome
Booking not required
FREE

October Art Trolley

25, 26, 27, 28 October
11.00-12.00noon
All welcome
Booking not required
FREE



Photography by Eve Photography

Special Events

Big Draw Little Draw

Join mima for the launch of the Campaign for Drawing's Big Draw 2011. We will be collecting your 'little' drawings on the Art Trolley to exhibit in November.
Saturday 8 October
1.15-4.15pm
All Welcome
Booking not required
FREE



Don't Miss

Tate Movie Animation Workshops

Make animated films from scratch with the team from Tate Movie inspired by *The Itch of the Golden Nit*. Bring a USB pen drive to take away your film at the end.
Thursday 25 August
11.00am-1.00pm or 3.00-5.00pm
Booking required
Max. 30 places per session
FREE

Tate Movie Film Screening

Watch *The Itch of the Golden Nit*
Thursday 25 August
2.00-2.45pm
Booking required
FREE

Booking Information

For event bookings and enquiries call mima reception on +44 (0)1642 726 720 during gallery opening hours. For all events visit mima reception on arrival. Early bird applies to booking and pre-payment one month in advance



Photography by Eve Photography

ADULT EVENTS

Talks

1.00pm Gallery Tour

With mima's Gallery Assistants.

Everyday from 5 August

1.00–1.30pm

FREE

Modern Art Explained: Collage

An opportunity to explore the collage movement with lecturer and journalist Dr Gail-Nina Anderson.

Saturday 22 October

2.00pm

£5 per person or £3.50 early bird

Booking required

mima Explained: How do you install an exhibition?

David Brown, mima's Technical Services Officer, covers the whys and hows of hanging an award-winning exhibition. Bring questions along for handy hints and tips.

Wednesday 10 August

2:00–3:30pm

£2.50

Booking required

mima Explained: Date with Kate

Join mima Director, Kate Brindley on an exclusive talk and tour of mima's current exhibitions with the opportunity to chat about the gallery's future programme over coffee and cake.

Friday 16 September

1.00–3.00pm

£5 per person or £3.50 early bird

Booking required.

In Conversation: Caroline Douglas, Head of Arts Council Collection and artist Margaret Harrison

Exploring themes in the current exhibition Transmitter/Receiver.

Thursday 29 September

5.45–6.45pm

£4 per person or £3.50 early bird

Booking required.

Maximum 60 places.

mima explained: mima's Café commissions

A closer look at mima's commissions, the café and related tableware, with Assistant Director Julia Stephenson

Wednesday 14 September

2.00–3.00pm

£2.50

Booking required

Book a private talk or tour at mima

mima also delivers talks and tours for organised groups £50 per adult group tour, max 25 people.

Booking required

Walks

Summer Walk to Temenos

A guided journey to visit the giant that is Temenos. Bring your sun hat and slap on the sunscreen for this leisurely walk over to Anish Kapoor's impressive sculpture.

Thursday 25 August

5.30pm

Booking required

FREE

Don't Miss

Night Out mima Open Mic Night

Turn up and listen to home-grown musical talent in mima's Café Prego, enjoy bar offers too. Last Thursday of every month. Line up on mima's website.

25 August, 29 September,

27 October

5.30–7.00pm **FREE**

7.00–9.30pm £2

Pay on the door

Performance

The Guide (El Guia)

Grab your headphones and let Reial Companyia de Teatre de Catalunya performers take you on an audio tour. A story of gallery workers will emerge.

Thursday 4 and Friday 5 August

30 mins per performance at

12noon, 12.35, 1.10, 1.45, 2.20, 2.55

FREE

Tickets required, available from

mima reception or ARC Box Office

tel. 01642 525199

www.arconline.co.uk

In collaboration with SIRF

www.sirf.co.uk



Photography by Eve Photography

Workshops

Drop in & Draw

An informal session focusing on mima's architecture and current exhibitions. Add your sketches to the mima sketch book, a growing archive of visitor's drawings.

Thursdays 4.15–5.15pm

7 July – 17 November

All welcome

Booking not required

FREE

Life Drawing

One hour evening sessions focusing on life drawing skills. Materials provided. No experience necessary. Clothed model used.

Thursdays 5.45–6.45pm

No entry after 5.45pm.

7 July – 17 November

£30 for 10 weeks pre-paid

£3.50 on door

Pay at mima reception

for ticket and entry

Photography for beginners

Collect top tips with professional photographer Charlotte Graham. Make the best of holiday snaps, publicity shots or atmospheric landscapes. Bring your own camera to this hands on session.

Sunday 14 August

1.00–3.00pm

£8 per person or £5 early bird

£5 if paid by 1 August

Booking required

Middlesbrough Pride Life Drawing

Middlesbrough Pride presents a one-off life drawing class in mima garden. Drag queens, Gina Tonic and Tess Tickle, will strike a pose or two for you to capture. Materials and drawing advice provided alongside summer tunes and drinks offers from Café Prego.

Thursday 8 September

5.45–6.45pm

£5 per person

Booking not required

Saltburn-by-the-Sea Sketching Trip

Focus on the stylish architecture of central Saltburn or capture the dramatic coastal views, with drawing tutor Jackie Steven. All materials provided. Dress for the weather.

Sunday 11 September

12.00–4.00pm, meet promptly

at mima reception £10 p/p incl

return transport

or

12.30–3.30pm, meet promptly

at Saltburn train station front

entrance £7

Booking and pre-payment essential

Printing + Collage

Combine relief printing and photocopier collage techniques to create work inspired by the current exhibition, with drawing tutor Jackie Steven.

Sunday 16 October

12.30–3.30pm

£10 p/p

Booking required

Don't Miss

Desired Futures: Developing creative landscapes symposium at mima

Discussion to create productive new potentials for art practices in Teesside and the North East. 15 September 2011, 6.00–7.00pm. FREE, booking required.

This symposium is for creative practitioners, researchers, educators or just those interested in changing and developing the cultural landscape in and across the region.

Booking required, RSVP by 1 September, call mima reception on 01642 726720 or email your details to mimabookings@middlesbrough.gov.uk



PLATFORM-A

TURNING POINT
NORTH EAST
(/ Supporting Critical Dialogue in the region /)

SCHOOLS & GROUPS

Teachers' Twilight Tour

Join our education team for a guided tour of mima's current exhibitions, a look at the mima support available to you and your school and opportunities and resources aimed at schools and groups.

Thursday 22 September

4.15pm

FREE

Participating teachers receive 10% off a school booking before March 2012. T&C's apply.

Gallery Workshop

mima's education team explore the exhibitions and artwork with your students. They will develop confidence and visual language through talking, making, creating and group tasks.

Tuesdays / Wednesdays

£2 per pupil for half day (am or pm)

£4 per pupil for a full day

Suitable for all key stages

and includes all materials

Big Draw Professional Development

Professional development day with artist Sally Taylor to celebrate this year's Big Draw. Discover new techniques and ways into drawing and lose that "I can't draw" mentality.

Wednesday 28 September 2011

10.00am–3.30pm

£65 per participant including lunch, refreshments and materials

Limited places, book early to avoid disappointment

Free self-led visits

mima is a free venue. Schools and groups are welcome to book an independent, self-led visit throughout the week at no cost.

For a full list of mima's schools and groups opportunities, or to make an enquiry or booking, call Claire or Vicky on 01642 726706/7 or email vicky_sturrs@middlesbrough.gov.uk or claire_pounder@middlesbrough.gov.uk



Photography by Cathal Carey

YOUNG PEOPLE

Giant Sculpture

Join our resident group of young people, TMT, to create a giant collage-based sculpture in mima garden.

12 August

11.00am–12.00pm & 1.00–2.00pm

FREE

Booking not required

TMT meet and chat

Join other young people and get involved in events in and outside of mima. Ages 14–21.

Thursdays 5.00–7.00pm

4, 18 August

1, 15, 29 September

13, 27 October

10 November

FREE

Booking not required

Booking Information

For event bookings and enquiries call mima reception on +44 (0)1642 726 720 during gallery opening hours. For all events visit mima reception on arrival. Early bird applies to booking and pre-payment one month in advance



Photography by Cathal Carey



Photography by Eve Photography

mima is on facebook and twitter
 Join mima's facebook page by searching mima Middlesbrough and follow us on twitter @mimamodernart to keep up to date with what's happening at the gallery

Calendar

Aug – Nov 2011

Everyday

- FREE unlimited Resources
- Stop, Look, Stay Bags
- Centre Space
- Stay + PLAY
- Daily Gallery Tour 1.00–1.30pm

Every Saturday

- Saturday Story Tree, 6 August–5 November 12.30–1.00pm
- Art Trolley, 23 July–19 November, 1.15–4.15pm

Every Thursday

- mimaDigs! 4, 11, 18, 25 August; 8, 15, 22, 29 September; 6, 13, 20 October; 3, 10, 17 November, 12.30–1.30pm
- mini mima, 8, 15, 22, 29 September; 6, 13, 20 October; 3, 10, 17 November, 10.00–11.30am, £3.50 per child
- Adult Life Drawing, 7 July–17 November, 5.45–6.45pm
- Drop In & Draw, 7 July–17 November, 4.15–5.15pm

August

e Everyday	1.00–1.30pm	p10	1.00pm Gallery Tour
f Every Tuesday, Wednesday, Thursday & Friday	11.00–12.00noon	p9	Summer Art Trolley
y Thursday 4, 18	5.00–7.00pm	p13	The Modern times meeting
e Thursday 4, Friday 5	12.00, 12.35, 1.45, 2.20, 2.55	p11	Performance: The Guide (El Guia)
a Wednesday 10	2.00–3.30pm	p10	mima explained: How do you install an exhibition?
y Friday 12	11.00–12.00noon & 1.00–2.00	p13	Giant sculpture
a Sunday 14	1.00–3.00pm	p12	Photography for beginners
f Thursday 25	11.00am–1.00pm & 3.00–5.00pm	p9	Tate Movie Animation Workshop
e Thursday 25	2.00–2.45pm	p9	Tate Movie Film Screening
a Thursday 25	5.30–6.30pm	p11	Summer walk to Temenos
y Thursday 25	5.00–9.30pm	p11	mima Open Mic Night

September

e Everyday	1.00–1.30pm	p10	1.00pm Gallery Tour
y Thursday 1, 15, 29	5.00–7.00pm	p13	The Modern Times meeting
a Thursday 8	5.45–6.45pm	p12	Pride Life Drawing
e Sunday 11	12.00 & 12.30	p12	Saltburn-by-the-Sea trip
a Wednesday 14	2.00–3.00pm	p11	mima explained: mima's café commissions
a Thursday 15	6.00–7.00pm	p10	Desired Futures: Developing creative landscapes symposium
a Friday 16	1.00–3.00pm	p10	mima explained: Date with Kate
t Thursday 22	4.15pm	p13	Teachers' Twilight Tour
t Wednesday 28	10.00am–3.30pm	p13	Big Draw Professional Development
a Thursday 29	5.45–6.45pm	p10	In conversation: Caroline Douglas, Head of Arts Council Collection and artist Margaret Harrison
a Thursday 29	5.00–9.30pm	p11	mima Open Mic Night

October

e Everyday	1.00–1.30pm	p10	1.00pm Gallery Tour
f Saturday 8	1.15–4.15pm	p9	Big Draw Little Draw
y Thursday 13, 27	5.00–7.00pm	p13	The Modern Times meeting
a Sunday 16, 23	12.30–3.30pm	p12	Printing + Collage
a Saturday 22	2.00–3.00pm	p10	Modern art explained: Collage
f Tuesday 25–Friday 28	11.00–12.00noon	p9	Art Trolley
a Thursday 27	5.00–9.30pm	p11	mima Open Mic Night

November

e Everyday	1.00–1.30pm	p10	1.00pm Gallery Tour
y Thursday 10	5.00–7.00pm	p13	The Modern Times meeting

mima friends

What else do mimafriends do?

Supporters contribute towards the development of mima and the purchase of key works for the collection. mimafriends also organise exclusive art trips, behind the scenes tours and exclusive studio visits. In addition members are rewarded with 10% discount when purchasing from mima's shop and Café Prego.

To join the friends group, which is a registered charity, register on-line at www.mima.friends.org.uk or simply complete an application form in the gallery. You can also volunteer to help with the running of the friends organisation.

The friends of mima have kindly supported the Ben Nicholson exhibition, currently on long-term loan to mima. Without this financial assistance the exhibition simply could not have happened.

Contact mimafriends

mimafriends, mima, Centre Square, Middlesbrough TS1 2AZ
e-mail enquiries@mimafriends.org.uk

Follow us on Facebook to find out more or see the website www.mimafriends.org.uk

mima | shop

mima shop is a great place to find quirky and unique gifts



Homewares by designer Snowdon Flood of mima and the Transporter Bridge from £6.99



Orla Kiely Mugs to brighten up your home £6.99



New Senior Picklesworth range of funky bags, stationery, keyrings, badges and more from £1.49

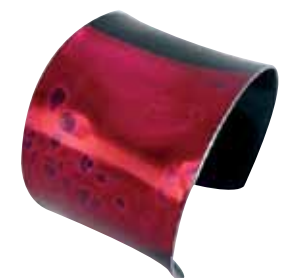


The official Temenos book celebrating Middlesbrough's new iconic sculpture. £15

Book launch at mima coming soon



New exhibition catalogue from £5 (RRP £6.99)



Michael Peckitt colourful aluminium jewellery from £9.00

You can now buy a selection of gifts on-line from mima shop via www.culturelabel.com



News

Arts Council funding gives major boost to mima

The investment will see mima's funding from ACE increase from £186,000 in 2011/12 to more than £500,000 for each of the next three years.

The decision – made at a time when significant cuts are being implemented by Arts Council England to arts organisations across the UK – demonstrates a high level of commitment to the gallery and an acknowledgement of mima's achievements in its first four years.



mima wins new work for the collection

mima took part in the national event that looks at gifting works to collections. mima selected, and successfully received, *Brooch*, 2010 by Italian goldsmith Stefano Marchetti, costing £5,300, which now forms part of Middlesbrough's collection.

mima takes part in Venice Biennale until November 2011

Led by The National Glass Centre at the University of Sunderland, the exhibition coincides with the high profile 54th Venice Biennale 2011. mima presents a recently acquired piece of artwork by Neil Brownsword, purchased with help from the Contemporary Art Society, alongside works from the permanent collection.

'Interloqui', is an exhibition and collaboration between cultural partners in the North East of England and Caterina Tognon Arte Contemporanea, Venice.



TMT

the modern times



TMT Catch Up: mima's award-winning resident group of young people are often out and about in Middlesbrough finding out what's hot. TMT member, Charlotte Wood, recently visited Middlesbrough's flagship designer store Psyche and interviewed the owner, Steve Cochrane.

What drew you to fashion?

Well, I was a singer in a punk band in the early 80s. The band weren't great but everyone loved the way we dressed. Our girlfriends made our clothes so in the end I decided to let the band continue without me and I opened a clothes shop instead.

What's the most inspirational place you have visited in the world?

New York. New York is exciting, dynamic and buzzy. It really gets it for me. It's full of life, the opposite of a sleepy beach resort.

So what is it that's kept you in Middlesbrough compared to all these amazing places?

I am from here, I like it here and I think that the quality of life is great here. there is a lot to offer and with places like Psyche and mima attracting more people Middlesbrough will only get better.

What characteristic has brought you success in the fashion industry?

Passion! I absolutely love my work. I love being here. I am totally enthusiastic about it, all day, everyday. It is an exciting, interesting, continually changing, worldwide thing!

Don't miss...
A display by mima in Psyche store coming soon

For more of the interview, TMT news & gossip find us on Facebook; Search **THE MODERN TIMES** and if you want to get involved post a message or ring mima reception on 01642 726720



We can provide this information upon request, in an alternative format that meets your needs Please contact +44 (0)1642 726 720 or email mima@middlesbrough.gov.uk

يمكننا توفير هذه المعلومات بتسقيق آخ عند الطلب، حسب احتياجاتك
رجاءً اتصل على الرقم
أو راسلنا على البريد الإلكتروني
mima@middlesbrough.gov.uk

我们可以根据请求以符合您的需要的格式提供本信息。
请致电 +44 (0)1642 726 720 或
发送电子邮件至 mima@middlesbrough.gov.uk 与我们联系。

हम यह जानकारी आपकी आवश्यकतानुसार एक वैकल्पिक प्रारूप में उपलब्ध करा सकते हैं
कृपया +44 (0)1642 726 720 पर संपर्क करें, या
mima@middlesbrough.gov.uk पर ई-मेल करें.

ਬੇਨਤੀ ਕਰਨ ਤੇ, ਅਸੀਂ ਇਸ ਜਾਣਕਾਰੀ ਨੂੰ ਇਕ ਬਦਲਵੇਂ ਫਾਰਮੈਟ, ਜੋ ਤੁਹਾਡੀਆਂ ਜ਼ਰੂਰਤਾਂ ਨੂੰ ਪੂਰਾ ਕਰੇ, ਵਿਚ ਪ੍ਰਦਾਨ ਕਰ ਸਕਦੇ
ਹਾਂ।
ਕਿਰਪਾ ਕਰਕੇ ਸੰਪਰਕ ਕਰੋ +44 (0)1642 726 720 ਜਾਂ ਈਮੇਲ ਕਰੋ
mima@middlesbrough.gov.uk

درخواست کرنے پر ہم یہ معلومات ایسے متبادل فارمیٹ میں فراہم کرسکتے ہیں جس سے آپ کی ضرورت کی
تکمیل ہوتی ہے۔
براہ کرم رابطہ کریں
mima@middlesbrough.gov.uk

Keep in touch

Sign up for email updates via www.visitmima.com

Or cut out this form and either post it to Marketing, mima, Middlesbrough Institute of Modern Art, Centre Square, Middlesbrough TS1 2AZ or hand in to a member of staff at mima's reception. Alternatively you can email your details to mima@middlesbrough.gov.uk

First name
Last name
Email address
Address
Postcode
Country

Email updates required

- Exhibitions
- Public events
- Kids/family
- Learning
- Shop offers and events
- mima friends

I picked up this what's on guide from:

- mima
- tourist information office
- other (please specify)

We may occasionally send you information about other carefully screened organisations and events we think you might be interested in. Please tick if you do not wish to receive information from selected organisations.

mima recommends...

PLATFORM A Gallery

Founded as an extension to Platform Art Studios in 2011, Platform A is a gallery dedicated to innovative developments in contemporary art through its diverse programme of exhibitions. Newly located in the railway station of central Middlesbrough, Platform A represents emerging and established artists. The inaugural show, FUZE, opens 28 July 2011.

Platform A
Middlesbrough Railway Station
Zetland Road, Middlesbrough TS1 1EG
Tel: 01642 252 061
Email: info@platformgallery.net
<http://platformgallery.net>

mima recommends...

Captain Cook Birthplace Museum & Dorman Museum

Middlesbrough Museums offer a fantastic insight into the region's history, its people and its connections with cultures from all over the world.

Take a look at what's on offer at
www.dormanmuseum.co.uk
and www.captcook-ne.co.uk

Accessibility



Visit

About mima

mima is situated in the heart of Middlesbrough town centre with paid car parking directly behind the building. We are just a 5–10 minute walk from both the train station and bus station.

Gallery and shop opening times

Tues, Wed, Fri and Sat
10.00am–4.30pm
Thurs 10.00am–7.00pm
Sun 12noon–4.00pm
Closed Mon

Please note that mima is now closed on Bank Holidays

FREE PARKING – Thursdays from 4.00pm

Hire a space / Book an event

We offer a competitive tariff including special rates for Middlesbrough businesses and partners of mima. Please contact [hires@middlesbrough.gov.uk](mailto: hires@middlesbrough.gov.uk) or call on +44 (0)1642 726 720 for all your event needs.

Every effort has been made to contact copyright holders. Any copyright holders we have been unable to reach or where inaccurate acknowledgement has been made are invited to contact the publisher.

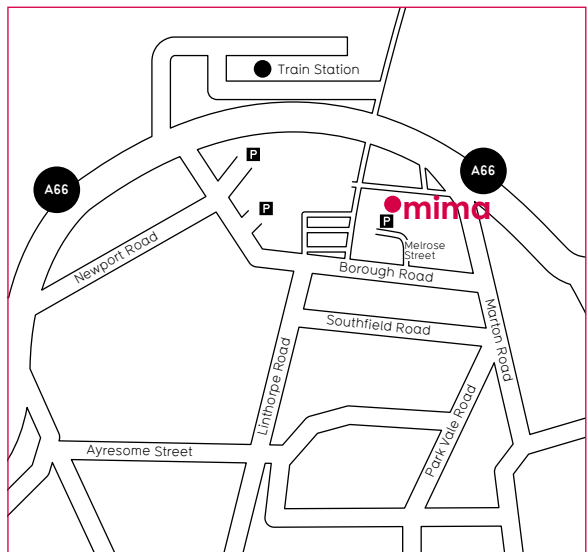


Contact

mima
Middlesbrough Institute
of Modern Art
Centre Square
Middlesbrough TS1 2AZ
t: +44 (0)1642 726 720*
f: +44 (0)1642 726 722
e: mima@middlesbrough.gov.uk
www.visitmima.com

* telephone reception available during gallery opening hours

If you have a special requirement please call us and we will do our best to assist you



Cover Image: John Stezaker, *Pair V*, 2007, collage, 17.8 x 24.9cm, Arts Council Collection, Southbank Centre, London © the artist